

Cam Locks

Medeco® high security cam locks are recognized throughout the world as the standard for protection in a 3/4" diameter lock. Medeco cam locks utilize hardened, stainless steel inserts throughout the cylinder to provide the ultimate defense against drilling, pulling, and other forms of vandal attack. Patented key control programs prevent the unauthorized duplication of keys and maintain system integrity. Keyed alike, keyed different, or master keyed, Medeco offers a complete line of various cam lock sizes and functions to meet your specific needs.



The Medeco³ unique design provides triple locking action, making the locks virtually pick proof. All Medeco³ keys and locks are protected under patent, trademark, and copyright laws. Medeco³ keys may only be duplicated by Medeco or by an authorized Medeco Service Center, and only at your request.

Benefits:

- ▼ All Medeco cylinders are constructed of durable machined brass components, designed to last the life of your equipment.
- ▼ Hardened stainless steel inserts inside the cylinder provide the ultimate defense against drill, pull, punch, and other forms of physical attack.
- ▼ Unique elevating and rotating tumbler pin system is virtually pick proof.
- ▼ Patented Medeco³ keys may only be duplicated by Medeco or authorized Medeco Service Center, and only at your request.
- ▼ Medeco cam locks are completely serviceable, and can be re-keyed in case of lost or stolen keys
- ▼ Medeco cam locks can be keyed in with other 60 series products (10 series products may be keyed into existing 60 series systems)
- ▼ Locks can be keyed alike, keyed different, or master keyed depending on your specific needs.
- ▼ Available in all standard lengths, key retained or not, one or two flat, and various rotations.

Warranty:

Warranted for two years against manufacturer's defects. See Medeco limited Warranty for full details.

The Medeco cam lock selector is designed to help determine which cam lock is suitable for your application. The selector will take you step by step through the process of picking out a specific cam lock as well as a cam. You may access this tool on our web site at www.medeco.com

Applications:

Medeco high security cam locks can be used in any standard 3/4" diameter application and a multitude of markets including:

Safe	Banking	Transit
Communication	Utility	Laundry
Alarm	Data Encryption	
Furniture	Parking	
Access Control	Locker	Vending
Cabinet	Pay Telephone	

Certification:

UL® 437 Listed

Technical Information:

Three, four, and five pin models available depending on size. Available in standard sizes from 7/16" to 2".

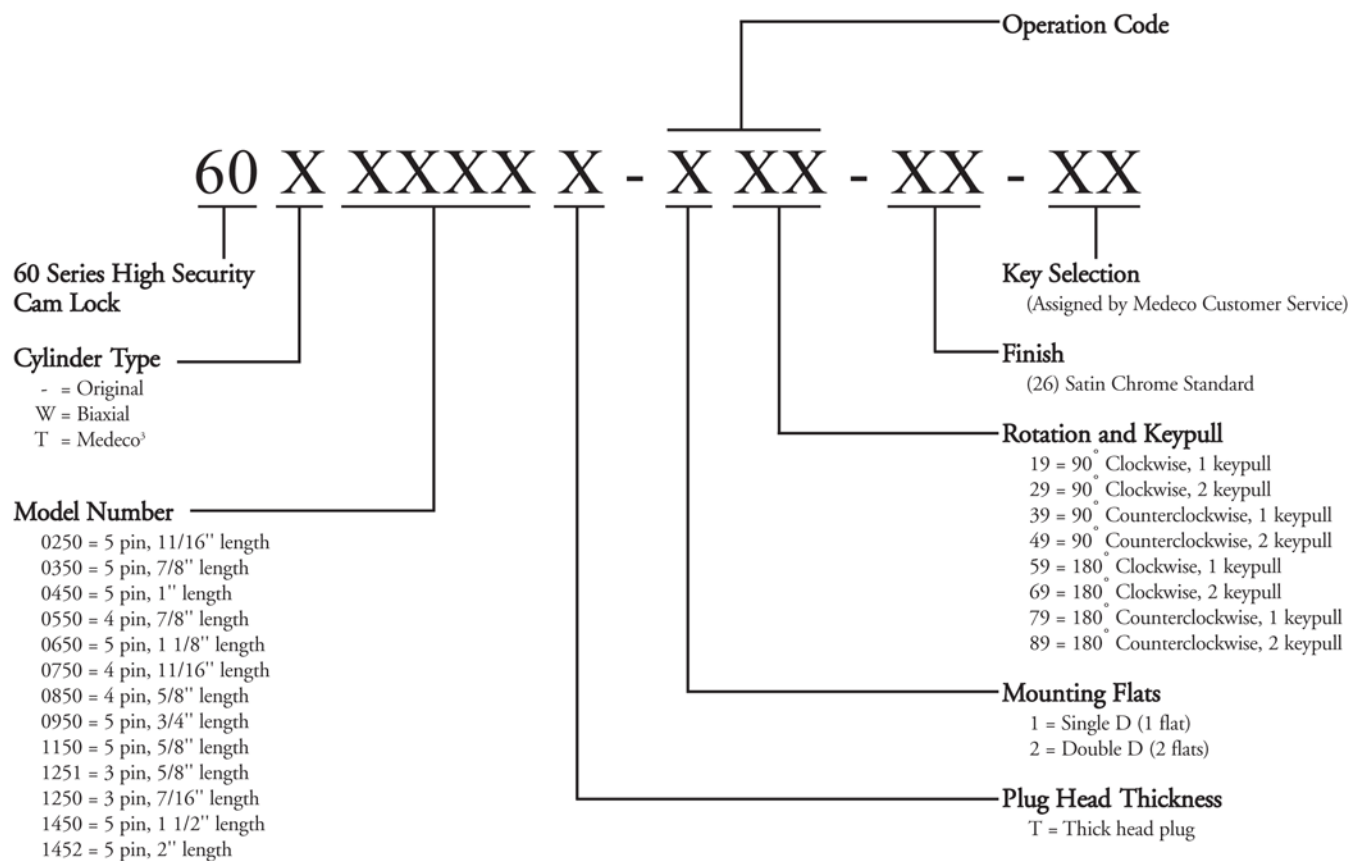
One and two flat models available, key retaining or not. Clockwise or counterclockwise rotation, 90° or 180°. Keyed alike, keyed different, or master keyed (four and five pin models) available.

Finishes:

26 satin chrome finish standard. Other finishes available, depending on volume.

Cam Locks

Ordering Instructions



Cam Locks

Exploded View

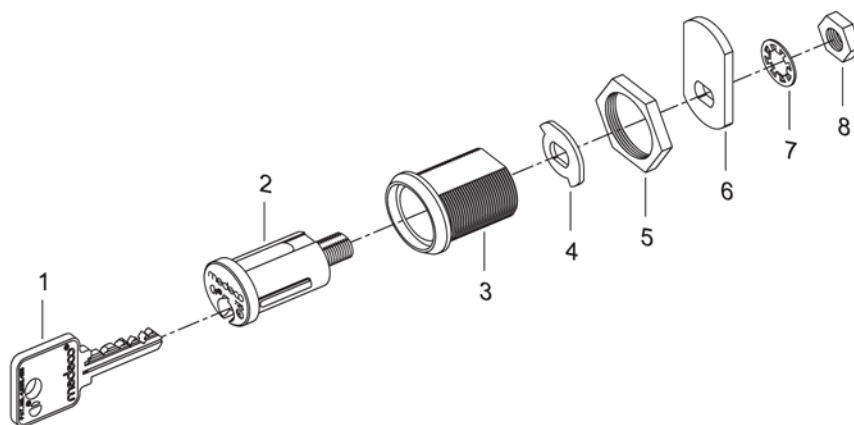


800.266.2646

www.coinsecurity.com

All Medeco® high security cam locks are UL® 437 listed and meet all ANSI A156.11 Grade 1 specifications. All Medeco³® cam locks are thick head. For Original cam locks, the thick head is required to key in with door security products. Medeco 60 series cam locks are sold less keys. Specify number of keys under a separate line item. Cams sold separately, reference cams and accessories section to select proper cam type.

HIGH SECURITY CAM LOCK



ITEM	DESCRIPTION
1	Key (sold separately)
2	Plug Assembly
3	Shell
4	Stop
5	3/4" Nut
6	Cam (sold separately)
7	Lock washer
8	9/32" Nut

Cam Locks

Technical Drawing

SIZES

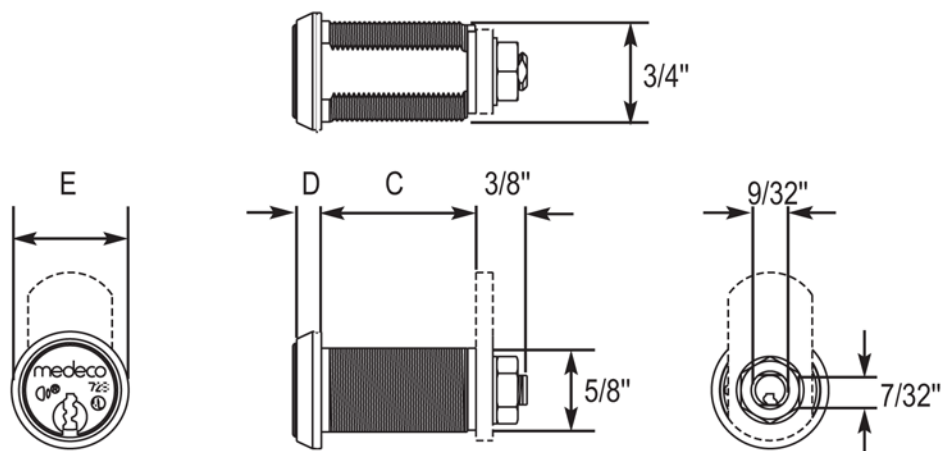


Table 1

Size Code	# of Pins	Dimension C (in.)	Dimension D (in.)	Dimension E (in.)
0250	5	11/16"	7/16"	1"
0350	5	7/8"	5/16"	7/8"
0450	5	1"	3/16"	7/8"
0550	4	7/8"	3/16"	7/8"
0650	5	1 1/8"	3/16"	7/8"
0750	4	11/16"	5/16"	7/8"
0850	4	5/8"	3/8"	7/8"
0950	5	3/4"	3/8"	7/8"
1150	5	5/8"	1/2"	1"
1250	3	7/16"	3/8"	1"
1251	3	5/8"	3/16"	7/8"
1450	5	1 1/2"	3/16"	7/8"
1452	5	2"	5/16"	7/8"

Standard sizes described. Consult Medeco® customer service for variations not described

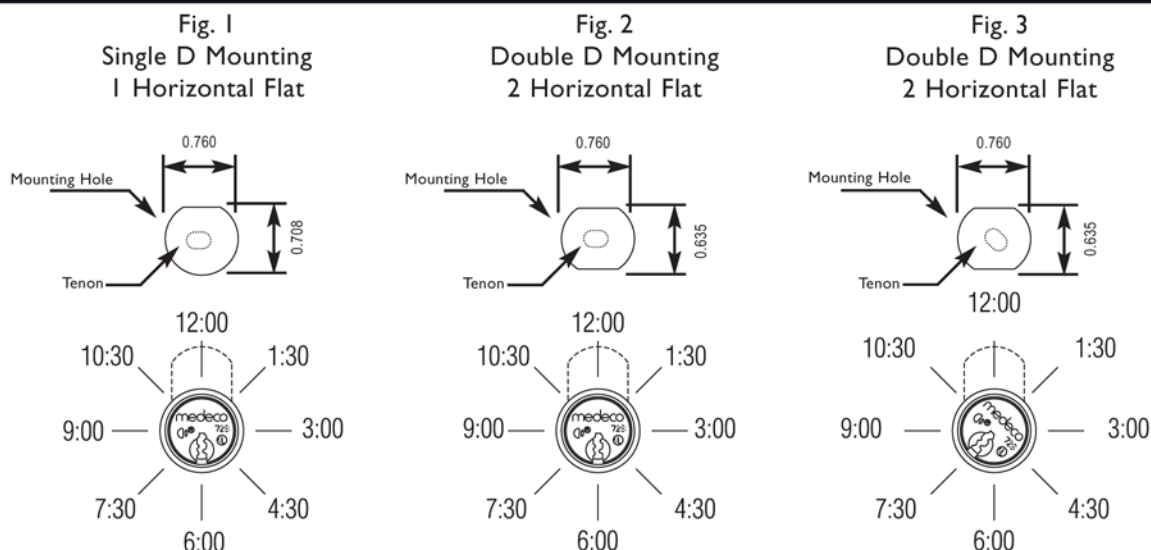


800.266.2646
www.coinsecurity.com

Cam Locks

Mounting Detail & Operation Codes

Keyway and tenon shown in locked positions relative to mounting flats. Exceptions - 149 and 249 functions, rotate 90° clockwise for locked positions.



Cylinders shown in locked positions.

Table 2

Operation Code	# of Mounting Flats	Reference Fig.	Direction	Keyway Rotation			# of Keypulls
				Travel	Locked	Unlocked	
119	1	1	Clockwise	90°	6:00	9:00	1
129	1	1	Clockwise	90°	6:00	9:00	2
139	1	1	Counterclockwise	90°	6:00	3:00	1
149	1	1	Counterclockwise	90°	9:00	6:00	2
159	1	1	Clockwise	180°	6:00	12:00	1
169	1	1	Clockwise	180°	6:00	12:00	2
179	1	1	Counterclockwise	180°	6:00	12:00	1
189	1	1	Counterclockwise	180°	6:00	12:00	2
219	2	2	Clockwise	90°	6:00	9:00	1
229	2	3	Clockwise	90°	7:30	10:30	2
239	2	2	Counterclockwise	90°	6:00	3:00	1
249	2	3	Counterclockwise	90°	10:30	7:30	2
259	2	2	Clockwise	180°	6:00	12:00	1
269	2	2	Clockwise	180°	6:00	12:00	2
279	2	2	Counterclockwise	180°	6:00	12:00	1
289	2	2	Counterclockwise	180°	6:00	12:00	2



800.266.2646

www.coinsecurity.com

Cam, Cabinet & Switch Locks



FEATURES	MEDECO ³	LOGIC	NEXGEN XT
Easily integrated into existing cam lock master key systems	●	●	●
Easy installation	●	●	●
Completely serviceable and may be rekeyed in the event of a lost or stolen key	●	●	●
UL437 Listing on cylinder for high security	●	●	●
Cam locks available in all standard lengths, flats, and rotations	●	●	●
Switch locks available in single or double switch models and momentary and maintained positions with silver or gold contacts (for low amperage applications) designed to accept quick connect leads	●	●	●

Cam Lock Technical Information:

- ❖ Three, four, and five pin models available
- ❖ Available in standard sizes from 7/16" to 2"
- ❖ One and two flat models available
- ❖ Key-retaining and non-key retaining models available
- ❖ Clockwise or counter clockwise rotation, 90° or 180°
- ❖ Keyed alike, keyed different, or master keyed

Finishes:

26D (Satin Chrome) finish is standard for all and switch locks.

Switch Lock Technical Information:

- ❖ Five pin, double D mounting standard
- ❖ Available in either single or double switch models with silver or gold contacts
- ❖ Rated at 7 amps resistive at 125/250 VAC
- ❖ Contacts designed to accept quick connect leads (amp connector number 60598-3)

Warranty:

Warranted for two years against manufacturing defects. See Medeco Limited Warranty for full details.

Medeco³ Premium High Security

For effective mechanical protection against most forms of attack as well as protection against unauthorized duplicate keys, Medeco³ cylinders are recommended. Security features including hardened steel components, pins that must be elevated, rotated, and interact with both a sidebar and a slider, and additional pick resistant features make Medeco³ the cylinder of choice to protect people, property and information.

Electronic Access Control

Many of the cylinders in this section are also available with EAC. See the Electronic Section for more details.



800.266.2646

www.coinsecurity.com

How To Order Cam & Switch Locks

Here are the 2 things you need to know to order cam locks:

1. What's the base part number by determining the length of cam lock needed?
2. What keyway?

Here are the 3 things you need to know to order switch locks:

1. Determine whether you need a single or double switch?
2. What keyway?
3. Determine the operation code needed?

To order custom high security cam locks, switch locks, threaded extension locks, or other specialty cylinders:

Go to the cam lock part number configurator at www.medeco.com, or contact Customer Service for assistance. **All cam and switch locks (except All N One cam locks) in this section are priced without keys.**

Offering hundreds of cam and cylinder length configurations, Medeco can fit nearly any application requiring a 3/4" diameter lock. Don't see the cam lock you need listed in our product catalog? Call our customer service department – chances are we have the specialty configuration that you need.

Many cam and switch locks are also available in either Logic or Nexgen electronic formats. See the eCylinder section for more information on Logic or Nexgen XT, or contact Medeco for eCylinder applications.

There is a 6 pc. minimum order quantity for high security cam locks. Distributors are available with inventory for overnight shipping in quantities less than 6.

You must specify the operation code and cam to complete the cam lock part number. With the exception of the cam lock kits, Medeco cam locks do not include keys or cams unless specified. Consult Medeco customer service or www.medeco.com for cam lock variations not listed.

Cam Lock Operation Codes

2 Flat, 1 Keypull, Clockwise 90°	219
2 Flat, 2 Keypull, Clockwise 90°	229
2 Flat, 1 Keypull, Counter-clockwise 90°	239
2 Flat, 2 Keypull, Counter-clockwise 90°	249
2 Flat, 1 Keypull, Clockwise 180°	259
2 Flat, 2 Keypull, Clockwise 180°	269
2 Flat, 2 Keypull, Counter-clockwise 180°	279
2 Flat, 1 Keypull, Counter-clockwise 180°	289

You must specify the rotation and cam to complete the removable core cam lock part number. With the exception of the cam lock kits, Medeco cam locks do not include keys or cams unless specified. Consult Medeco customer service or www.medeco.com for variations not listed.

X = Rotation for Removable Core Cam Locks

- 0 = 90° Clockwise
- 1 = 90° Counter-clockwise
- 2 = 180° Clockwise
- 3 = 180° Counter-clockwise



800.266.2646
www.coinsecurity.com

Screws & Caps

Description	Part Number
1/4"-2 8 x 2 1/2" Socket Head Cap Screw	CP -0 1152 0 -4 0 0
5 Pin, Pin Hole Covers-Brass (sold in bags of 10 0)	CP -170 0 2 1
4 Pin, Pin Hole Covers-Brass (Sold in bags of 10 0)	CP -170 0 4 1
3 Pin, Pin Hole Covers-Brass (sold in bags of 10 0)	CP -170 0 3 1



Security Collars

Description	Part Number
Cam lock security collar	CP -0 70 50 1
Cam lock security collar	CP -0 70 13 1
Cam lock security collar	CP -0 70 161
Cam lock security collar	CP -0 70 171
Cam lock security collar	CP -0 70 4 4 1
Cam lock security collar	CP -0 70 2 0 1
Cam lock security collar	CP -0 70 111
Cam lock security collar	CP -0 70 14 1
Cam lock security collar	CP -0 70 181
Cam lock security collar	CP -0 70 4 81
See following chart for specific dimensions	Dimensions



Spacers

Description	Part Number
Cam lock spacer, obtain specific part number from following dimension chart.	CP -160 X X X



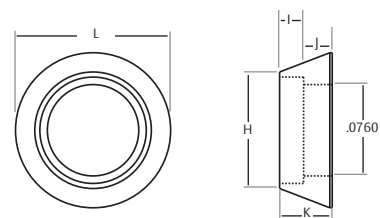
800.266.2646

www.coinsecurity.com

**Refer to the eCylinder section for more detail on specific technologies available and pricing.

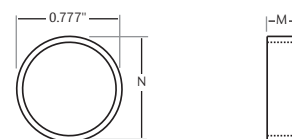
The * in the part number is replaced with: T=Medeco3 , W=Biaxial, C=Logic, "-"=Original

***See key section for surcharges for custom coined cut keys or special stamping requirements



Security Collars

Part Number	(H)	(I)	(J)	(K)	(L)
CP-070501	1.000"	.142"	.170	.312"	1.290"
CP-070131	.885"	.142"	.170"	.312"	1.210"
CP-070161	.885"	.188"	.250"	.438"	1.356"
CP-070171	.885"	.200"	.238"	.438"	1.290"
CP-070441	.885"	.260"	.070"	.330"	1.210"
CP-070201	.885"	.262"	.050"	.312"	1.210"
CP-070111	.885"	.278"	.160"	.438"	1.290"
CP-070141	.885"	.325"	.050"	.375"	1.275"
CP-070181	1.000"	.450"	.050"	.500"	1.250"
CP-070481	1.000"	.638"	.050"	.688"	1.313"



Spacers

Part Number	(M)	(N)
CP-160051	.125"	.875"
CP-160101	.140"	.875"
CP-160071	.188"	.875"
CP-160111	.200"	.875"
CP-160081	.250"	.875"
CP-160091	.275"	.875"
CP-160301	.375"	.875"
CP-160121	.400"	.875"
CP-160061	.530"	.875"
CP-160271	.437"	.875"
CP-160541	.031"	.875"
CP-160551	.062"	.875"
CP-160571	.312"	.875"
CP-160591	.062"	.995"
CP-160601	.125"	.995"
CP-160611	.250"	.995"



800.266.2646
www.coinsecurity.com